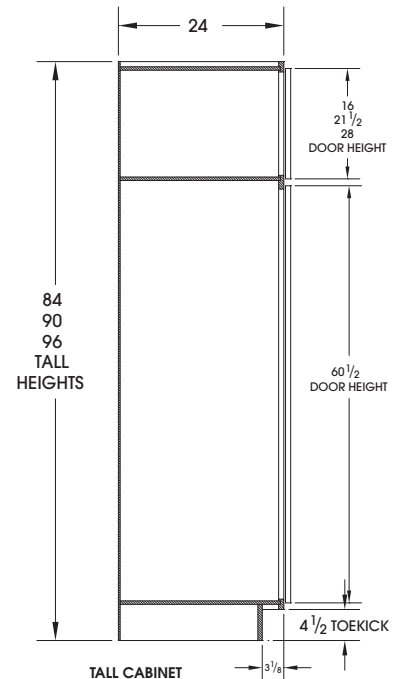
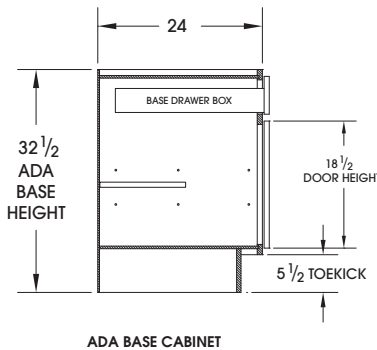
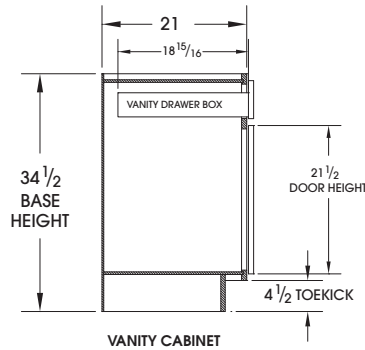
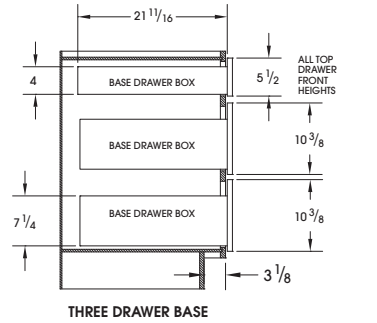
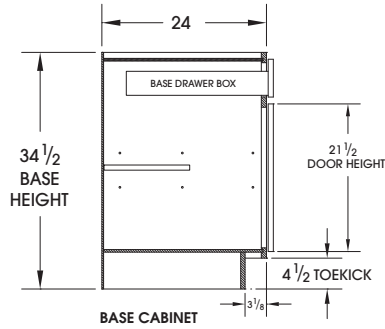
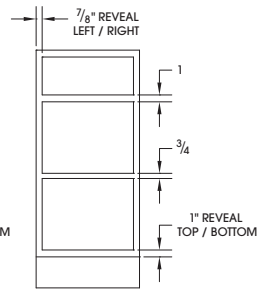
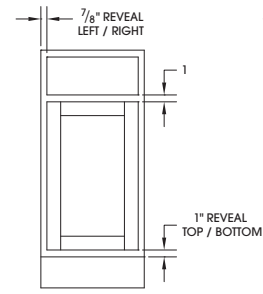
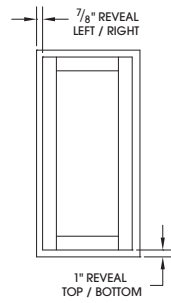
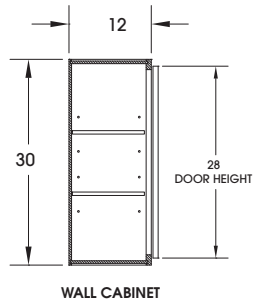


CABINET DIMENSIONS

CABINET DIMENSIONS



RAILS AND STILES ARE 1 1/2" WIDE UNLESS OTHERWISE NOTED
CABINETS 30" WIDE AND UP WILL RECEIVE A 3" CENTER STILE
UTILITY CABINETS HAVE SAME LOWER OPENING. UPPER SECTIONS GROW FOR 90" AND 96" HEIGHTS
90" UTILITY CABINETS HAVE A 2 1/2" WIDE CENTER RAIL

